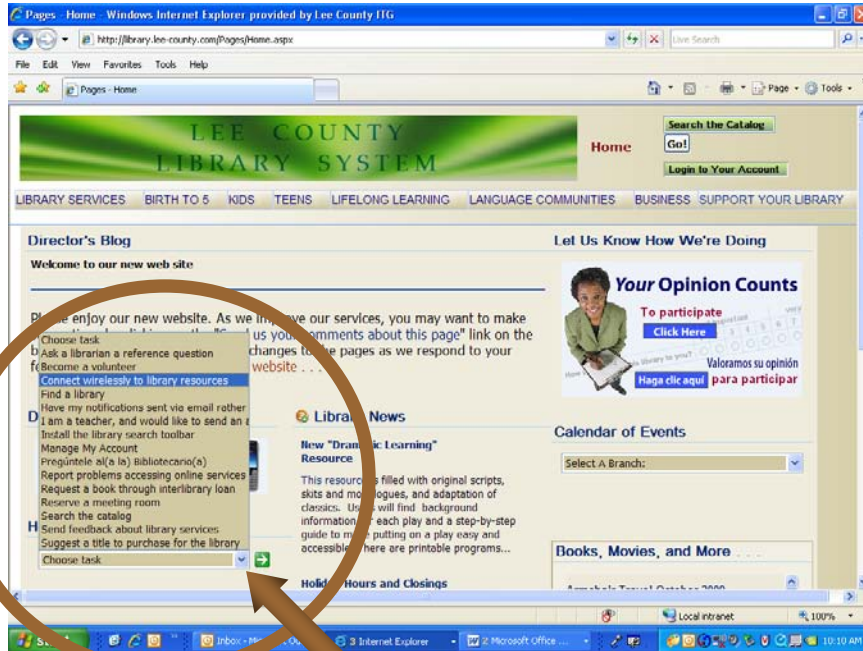
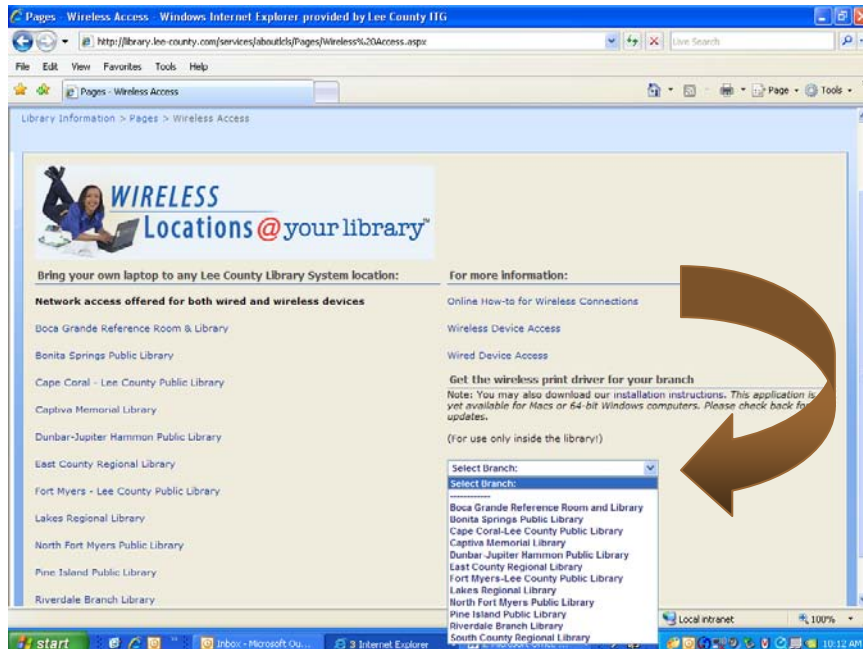


Wireless Printing Instructions

On your laptop, open the internet and go to the Lee County Library System Homepage. The following steps need to be completed once at each library location where you wish to print.

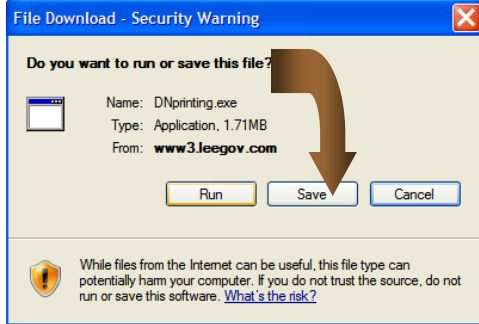


Select **How do I...** "Choose task" menu **arrow**, then **Connect wirelessly to library resources** from the menu; select the **green box with arrow** to go. The following will open.



Select the pull down menu **arrow** to select the branch you are visiting to download the wireless print driver for that library.

A download box (like below) will appear.



Select **Save**. Select a location to save the Xxprinting.zip file where you will be able to find it easily. A suggestion: the desktop. Once you have selected your location, select **Save**.

You will then receive the message “Download Complete.”

Select “Open Folder”. The double click the Xxprinting.zip file to open it. It will open a folder with the Xxprinting.exe file.

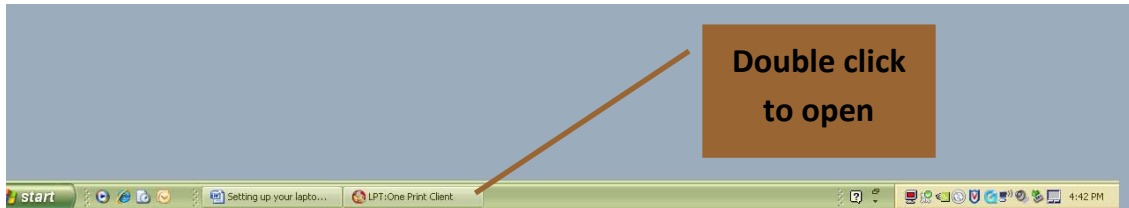
Select **Run**.

Now this message box will appear.



Select **Run**. Please be patient while process is completing.

This will open LPT: One Print Client” and place it on your taskbar. This needs to be open to print.

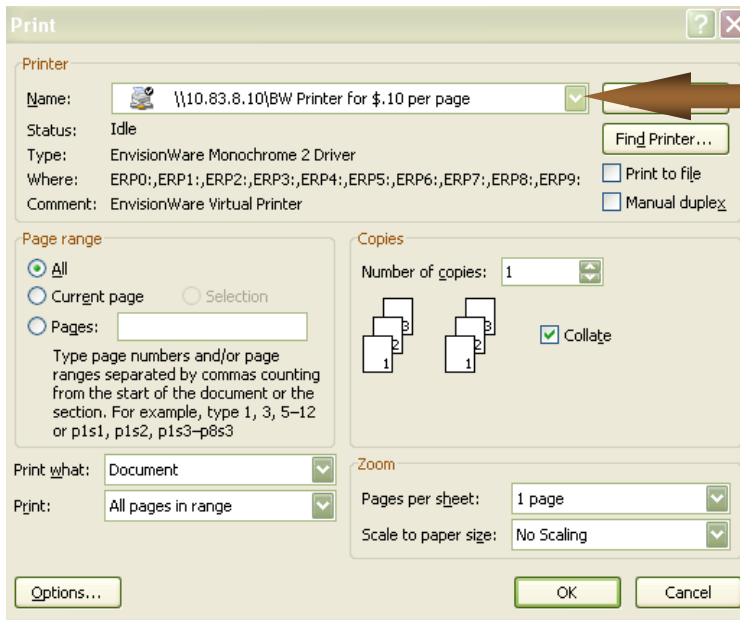


This box will open. ****Note:** Only select **Stop Print Client** when you have finished printing.



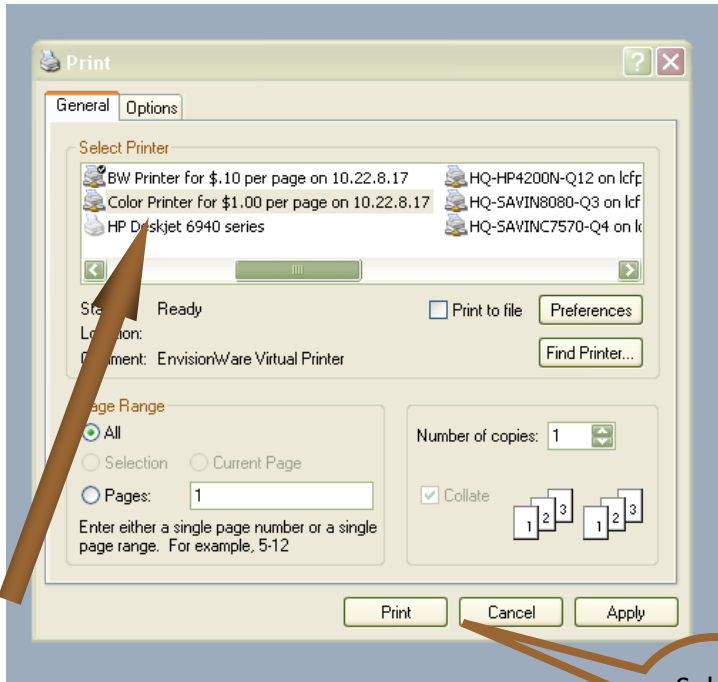
Go to the Web site or open the document you wish to print. Select **File**, select **Print**.

The printer name should indicate **BW Printer for \$.10 per page**



****Note:** If it does not, you must select the appropriate printer. Select the drop down box arrow (following the name of the printer) to select **BW Printer for \$.10 per page**.

If you wish to print in color, select the dropdown box arrow (following the name of the printer) and select **Color Printer for \$1.00 per page**.



Select **Print**

Once you have the correct printer highlighted,

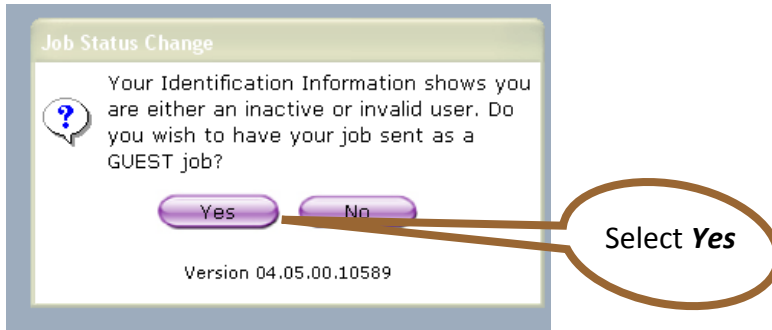


After entering,
select **OK**

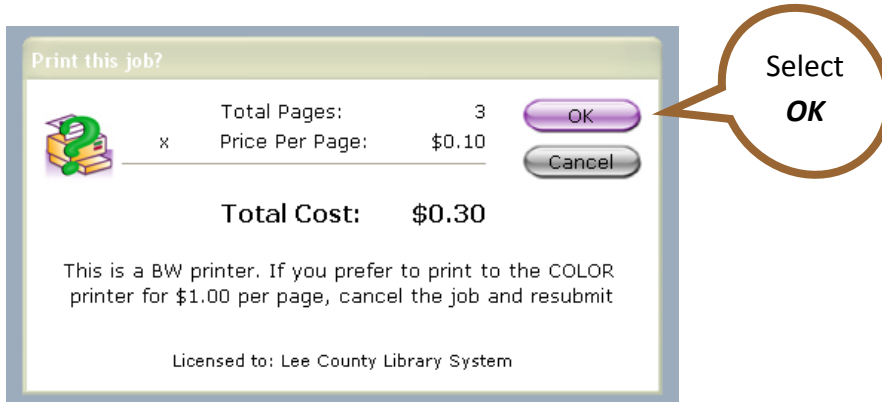
Enter User ID and User PIN.

****Note:** We recommend you use your library card number and PIN. If you do not have a Lee County Library card number, create a User ID and User PIN that you will be able to remember. Each additional print job you send during your session will automatically use that user ID and PIN.

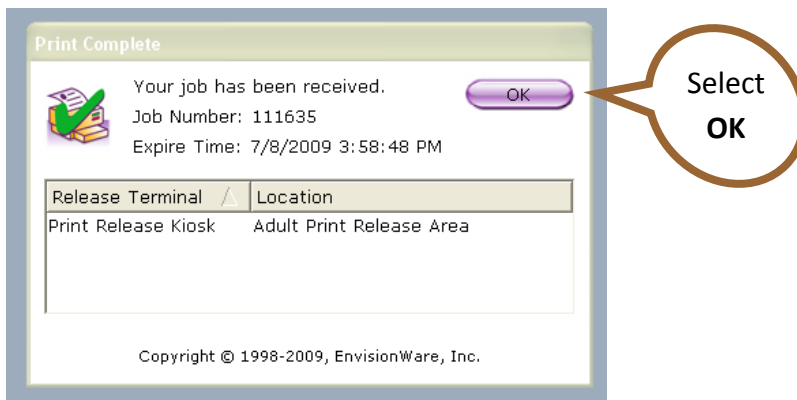
Also, if you receive the GUEST job message (next screen shot) that is okay. Just make sure you remember your User ID and User PIN.



You will have a verification screen with the total amount owed.



Once the confirmation box appears, your print job has been sent.



When you are ready to retrieve your documents, locate the print release kiosk to pay for and collect your page(s).

Additional information –

- You may pay for your print job(s) with coins or dollar bills. The Circulation Desk **may** be able to break larger bills.
- Your print job will remain in the print queue for 4 hours. If it is not printed in that time frame, it will be deleted.